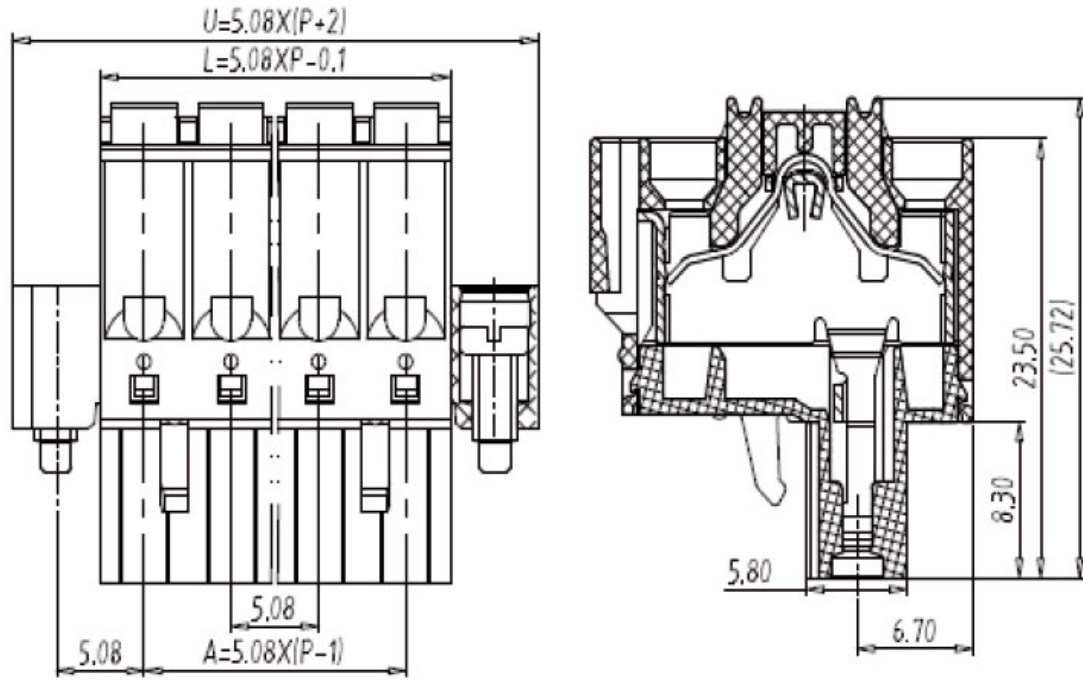


- 产品类型：插拔式端子,
- 接线方式：弹簧连接,
- 间距：5.08mm,
- 电压：300V,
- 电流：12A,
- 位数：2-24P

## 基本参数

|   |   |
|---|---|
| 间距(Pitch):  | 5.08mm  |
| 电压(Rated voltage)-UL:                               | 300V  |
| 电流(Rated current)-UL:                               | 12A   |
| 电压(Rated voltage)-IEC:                              | 320V  |
| 电流(Rated current)-IEC:                              | 15A   |
| 线径(Wire range)-UL:                                  | 26-12AWG  |
| 线径(Wire range)-IEC:                                 | 0.34-2.5mm <sup>2</sup>   |
| 位数(Pole number):                                    | 02~24P  |
| 绝缘材料(Insulation Material):                          | PA66 UL94 V-0   |
| 电流承载部件材料和镀层(Material & Plating of Current carrier): | Copper alloy, Tin plated  |
| 绝缘电阻(Insulation Resistance):                        | 500MΩ or more at DC500V   |
| 耐电压(1分钟)(Withstanding Voltage/1Min):                | 2200V   |
| 额定冲击电压(Rated surge voltage):                        | -   |
| 接线螺丝(Wire clamp unit Screw), 最大扭矩(torque Max.):     | -   |
| 固定螺丝(Mounting Screw), 扭矩(torque):                   | M2.5, 0.25Nm Max  |
| 接线弹片材料(Material of Clamp spring):                   | -   |
| 剥线长度(Wire stripping length):                        | 10-11mm   |
| 使用温度(Operating temperature):                        | -40°C ~ +105°C  |
| 焊接方式(Soldering recommend):                          | -   |
| 认证(Approval):                                       |  |

## 尺寸图



## 订购产品

| 产品名称  | 间距     | 位数     | 产品型号       | 3D下载 | 2D下载 |
|-------|--------|--------|------------|------|------|
| 插拔式端子 | 5.08mm | 02~24P | SPA508-W09 |      |      |

## 资料下载

|      |                          |
|------|--------------------------|
| 产品目录 | <a href="#">接线端子选型手册</a> |
|------|--------------------------|